

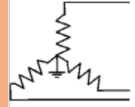


Installation Data Sheet
Series: 1:1 Belt Drive SK.2
Document No.: TI-DATA-2010-SK15T 20T
Version: 3.0
Revision Date: 12/8/25

Model	SK 15T			SK 20T		
Rated Pressure [psig]	125	160	217	125	160	217
I. COOLING DATA						
Cooling System Available [Std., Opt.]	A/C			A/C		
Standard Ambient Temp. Range [°F]	40 - 115			40 - 115		
VENTILATION OF COMPRESSOR ROOM						
Air Inlet Opening [sq. ft. free area] (A/C) Z	4.8			5.4		
Solution A (forced ventilation with exhaust fan) as shown in service manual						
Cooling Fan Capacity [CFM] (A/C)	3,237			3,826		
Solution B (exhaust air used for space heating) as shown in service manual						
Internal Cooling Fan Capacity [CFM] (A/C)	Compressor		Dryer	Compressor		Dryer
	1,530		412	1,825		412
Max. Additional Pressure Drop for Ducts [inch Water Column] (A/C)	0.12			0.12		
Exhaust Air Opening Reference Dimensions (L x W) [in]	31 x 31			31 x 31		
<p>Model shown for reference only Actual Duct size may vary with installation</p>						
Solution A Exhaust Fan						
Solution B Exhaust Duct						
Ventilation of Compressor Room Z						
AIR COOLED DATA						
Internal Cooling Fan Capacity [CFM]	1,530			1,825		
Approach Temp. [°F]	Reference conditions: 14.5 psia, 30% relative humidity and 68°F inlet air temperature.			10.8		
Typical Heat Rejected [BTU / HR]	49,000			61,000		



Installation Data Sheet
Series: 1:1 Belt Drive SK.2
Document No.: TI-DATA-2010-SK15T 20T
Version: 3.0
Revision Date: 12/8/25

Model	SK 15T			SK 20T		
Rated Pressure [psig]	125	160	217	125	160	217
II. ELECTRICAL DATA						
<i>Electrical data may vary in accordance with motor manufacturer's specifications. Motors are EISA compliant.</i>						
DRIVE MOTOR						
Motor HP	15			20		
Insulation Class	F			F		
Standard Voltage	208/230/460V/3ph/60Hz			208/230/460V/3ph/60Hz		
Full Load Amps [FLA] @ 208V/3ph/60Hz	37.5			51		
Full Load Amps [FLA] @ 230V/3ph/60Hz	36.5			49		
Full Load Amps [FLA] @ 460V/3ph/60Hz	18.2			24.5		
Full Load Amps [FLA] @ 575V/3ph/60Hz	15			20		
TOTAL PACKAGE DATA (A/C)						
Do NOT operate package on an unsymmetrical power supply. Also do NOT operate package power supplies such as a three-phase WYE system with the center point not solidly grounded or on a three-phase (open) delta system. The machine requires a symmetrical three-phase power supply transformer with a WYE configuration as shown. With a symmetrical three-phase supply the phase angles and voltages are all the same. Other power supplies are not suitable.						Three-phase star circuit (WYE); 3 wire; center point solidly grounded
Continuous Duty [Hours per day]	24			24		
Control Cabinet Class (NEMA)	12			12		
Short Circuit Current Rating (SCCR) [kA] @ 460V/3ph/60Hz	Field installed fuse required, see below*			50		
Short Circuit Current Rating (SCCR) [kA] @ 575V/3ph/60Hz	Field installed fuse required, see below*			50		
Package Full Load Amps @ 208V/3ph/60Hz [FLA]	48			60		
Package Full Load Amps @ 230V/3ph/60Hz [FLA]	45			58		
Package Full Load Amps @ 460V/3ph/60Hz [FLA]	22			29		
Package Full Load Amps @ 575V/3ph/60Hz [FLA]	18			23		
Recommended Disconnect Fuse Size [Amps] @ 208V/3ph/60Hz	*Time delay (dual element) fuse; Class J ≤ 600A (e.g. AJT) / Class L > 600A (e.g. A4BQ). Based on 2020 NEC 240.6, 430.52, and Tables 430.52, 430.248, and 430.250			70		
Recommended Disconnect Fuse Size [Amps] @ 230V/3ph/60Hz				70		
Recommended Disconnect Fuse Size [Amps] @ 460V/3ph/60Hz				30		
Recommended Disconnect Fuse Size [Amps] @ 575V/3ph/60Hz				25		
Recommended Disconnect Wire Size [AWG/kcmil] @ 208V/3ph/60Hz	The following multi-strand copper core wires are given according to 2020 NEC 310.14, 310.15, 310.16 and table 310.16 adjusted for 40°C ambient temperature. If other local conditions prevail, for example high temperature, the cross section should be checked and adjusted according to 2020 NEC 110.14(C), 220.3, 310.14, 310.15, 310.16, 430.6, 430.22, 430.24, 670.4(A) and other local codes.			4 AWG per phase and ground		
Recommended Disconnect Wire Size [AWG/kcmil] @ 230V/3ph/60Hz				4 AWG per phase and ground		
Recommended Disconnect Wire Size [AWG/kcmil] @ 460V/3ph/60Hz				10 AWG per phase and ground		
Recommended Disconnect Wire Size [AWG/kcmil] @ 575V/3ph/60Hz				10 AWG per phase and ground		



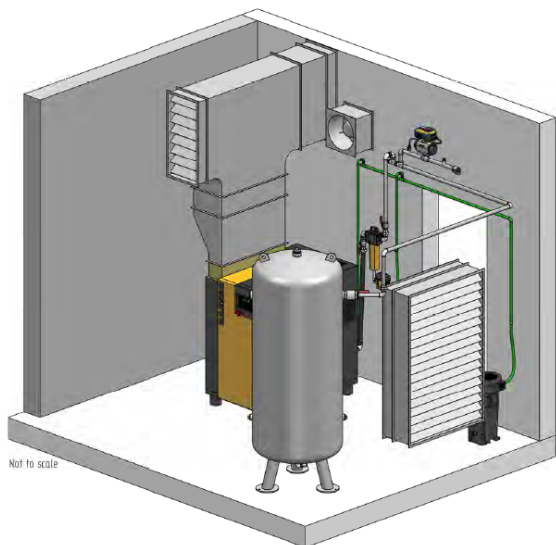
Installation Data Sheet
Series: 1:1 Belt Drive SK.2
Document No.: TI-DATA-2010-SK15T 20T
Version: 3.0
Revision Date: 12/8/25

Model	SK 15T			SK 20T			
	Rated Pressure [psig]	125	160	217	125	160	217
INSTALLATION and MAINTENANCE DATA							
A/C with Super Soundproofing [dB(A)]	SOUND PRESSURE LEVEL [Measured in dB(A) according to ISO 2151 using ISO 9614-2]	67			68		
A/C Air Discharge [inches NPT or Flange]		1 NPT			1 NPT		
Power Input Conduit Opening(s) [inches]		1 5/8			1 5/8		
Condensate Drain Connection [NPT]		1/4			1/4		
Width [inches]		29 1/2			29 1/2		
Depth [inches]		48 3/4			48 3/4		
Height [inches]		49 1/2			49 1/2		
Floor Space [sq. ft.]		10			10		
Weight (A/C) [lb]	Weight may vary based on airend selected.	853			871		
COMPRESSOR FLUID DATA							
Fluid Capacity (A/C) [gal]		1.8			1.8		
Flow Rate [gal/min]		3.2			3.2		
Typical Oil Consumption [fl. Oz./100 h]		1.8			2.2		
Standard Fluid Type		Sigma S-460			Sigma S-460		
MAINTENANCE PARTS							
Air Inlet Filter		6.4432.0					
Filter Mat (optional)		5.5850.0					
Filter Mat for Control Cabinet		6.3572.0 (x2)					
Fluid Filter		6.3462.1					
Fluid Separator Kit		6.3792.2					
Maintenance Kit for Optional 5-year warranty		AN5YRKTSK3					
Maintenance Kit for Optional 5-year warranty, with food-grade lubricant		AN5YRKTSK3F					
DRYER DATA - FOR T MODELS							
Dryer Model		ABT25			ABT25		
Maximum Inlet Air Pressure (Compressed Air at Inlet to Dryer) [psig]		232			232		
Nominal Pressure Drop at Rated Flow [psid]		3			3		
Rated Dewpoint [°F] at Standard Conditions	Reference conditions: 14.5 psia, 30% relative humidity and 68°F inlet air temperature.	38			38		
REFRIGERATION SYSTEM DATA - FOR T MODELS							
Compressor Type		GP12YG			GP12YG		
BTU/Refrigeration ASHRAE		4350			4350		
Outlet Air Temperature (Nominal at Rated Conditions) [°F]	Reference conditions: 14.5 psia, 30% relative humidity and 68°F inlet air temperature.	70			70		
Refrigerant Type		R-513A			R-513A		
GWP (Global Warming Potential)		629			629		
CO2 equivalent [t]		0.33			0.33		
Refrigerant Charge [lb]		1.15			1.15		
Air Flow Across Condenser [CFM]		412			412		
Air Receiver Tank Size - AIRCENTER units only [gal]	Simplex 100 gallons / Duplex 200 gallons	92.5			92.5		

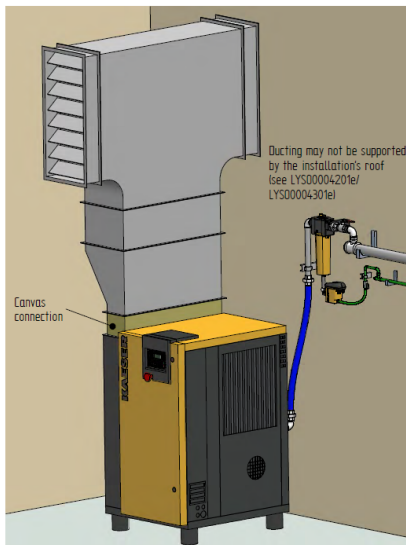
Model	SK 15T			SK 20T		
	125	160	217	125	160	217
Rated Pressure [psig]						

SAMPLE SKETCHES

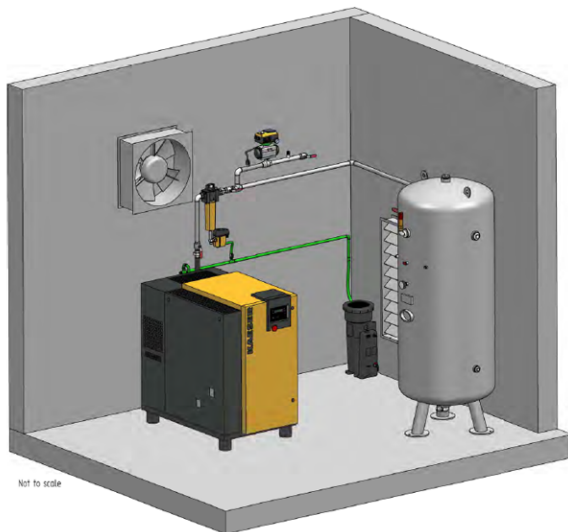
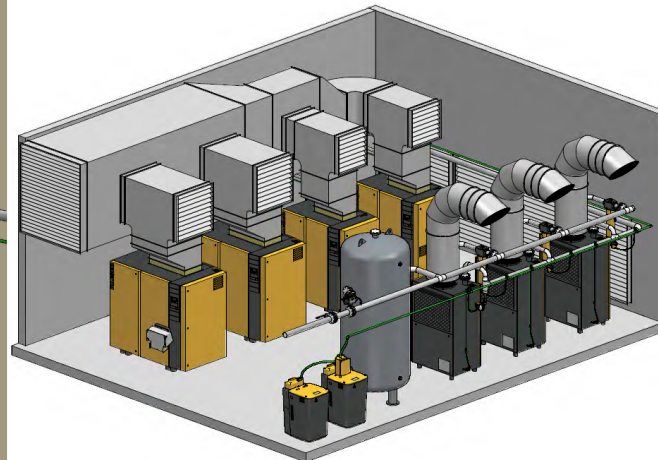
Sample Installation Planning
Examples of room ventilation and ductwork
Please note the upsizing required for compressor exhaust ducts



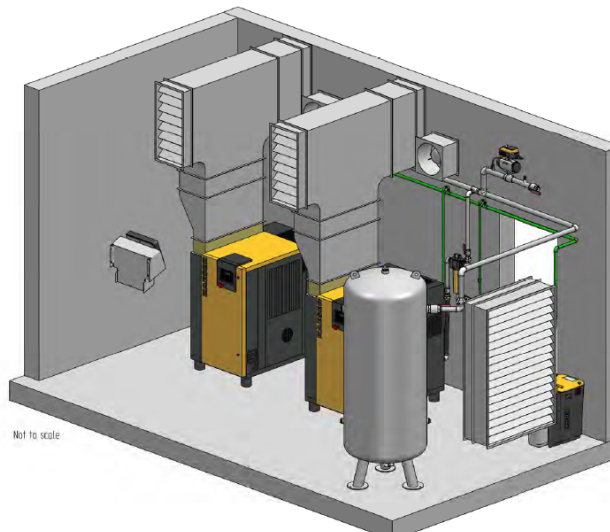
SK 20 T / F26KE Sample Layout



Duct / Pipe connection SK



SK 20 T / F26KE Sample Layout



(2x) SK 20 T / (2x) F26KE

**Example designs only,
not for construction
purposes.**